

Spectral Drift (TSDF)

Product Quick Specs

Style Name/Number	Spectral Drift TSDF
Color Name/Number	Ash SDF20
Construction	Patterned Scroll
Standard Backing	Nexus® Modular
Dye Method	Solution Dyed
Fiber Type	Encore® SD Ultima® (with recycled content)
Face Weight	18 oz./sy (610 grams/m2)
Pile Density	6894 oz./y3 (255.63 kg/m3)
Pattern Repeat	N/A
Gauge	1/12 (4.72 rows/cm)
Stitches	10.33 stitches/in (4.07 stitches/cm)
Standard Size	18" x 36" approx. (45.72cm x 91.44cm)
Standard Adhesive	Commercialon Premium Modular and LVT Adhesive
Optional Adhesive	TileTabs
Smoke Density	Less than 450 flaming
Static Test	Less than 3 kv
Standard Warranties	Nexus Modular Commercialon Adhesive for Modular Carpet & LVT Nexus FC Cushion Encore SD Ultima Fiber
Optional Warranties	Commercialon High Moisture Adhesive for Modular Carpet and LVT Tile Tabs



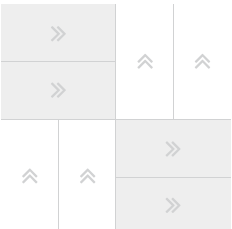
Products Installed



Spectral Drift TSDF
Modular
SDF20 Ash

CARPET

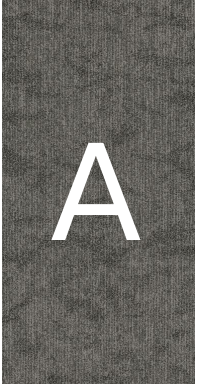
Installation Method



Parquet (18x36)

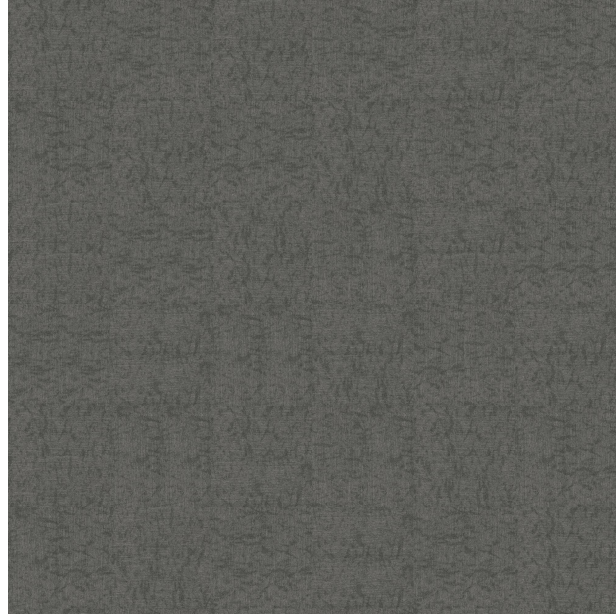
This three dimensional rendering is for visualization purposes only and may not be an exact representations of the selected products. Pile heights may vary from product to product and adhesive requirements may vary depending on product selection. The review of actual product samples are recommended before final selection. Please contact your EF Contract sales representative with any questions. This unique carpet design is protected under the U.S. Copyright Act of 1976. Any unauthorized copying or duplication of this design constitutes copyright infringement in violation of federal law.

Keys



Spectral Drift TSDF
Modular
SDF20 Ash

CARPET



Pattern Diagram

